

GODIVA BEARINGS

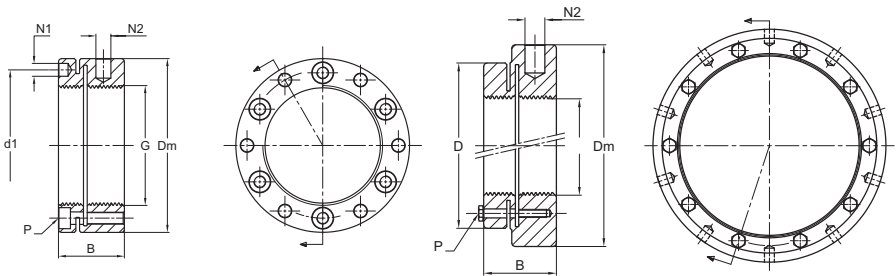


NSA
PRECISION NUTS



NSA Precision Nuts is designed and manufactured to lock mechanical assemblies precisely in the desired position. Its locking method consists by tightening the lock screws located on the face of the nut, ensuring a quick, safe and precise assembly, without the need of additional elements such as keyways in the shaft or lock washers and/or lock tabs.

Great accuracy, easy assembly, combined with simple and quick disassembly.



UP TO NSA 200x3

FRP, NSA 210x3 AND UP

Part Number	G*	Dm (mm)	B (mm)	D (mm)	N1	N2	P	Fixing Torque (Nm)	Weight (Kg)	D1
NSA 30x1.5	M 30x1.5	48	20	-	4	5	M4	2.9	0.153	40.5
NSA 32x1.5	M 32x1.5	50	22	-	4	5	M4	2.9	0.178	42.5
NSA 35x1.5	M 35x1.5	53	22	-	4	5	M4	2.9	0.195	45.5
NSA 38x1.5	M 38x1.5	58	22	-	4	5	M4	2.9	0.236	48.5
NSA 40x1.5	M 40x1.5	58	22	-	4	5	M4	2.9	0.221	50.5
NSA 42x1.5	M 42x1.5	60	22	-	4	5	M4	2.9	0.225	52.5
NSA 45x1.5	M 45x1.5	68	22	-	4	6	M4	2.9	0.221	58
NSA 48x1.5	M 48x1.5	68	25	-	4	6	M4	2.9	0.321	59.5
NSA 50x1.5	M 50x1.5	70	25	-	4	6	M4	2.9	0.34	61.5
NSA 52x1.5	M 52x1.5	72	25	-	4	6	M4	2.9	0.343	63.5
NSA 55x1.5	M 55x1.5	75	25	-	4	6	M4	2.9	0.363	66.5
NSA 55x2	M 55x2	75	25	-	4	6	M4	2.9	0.365	66.5
NSA 58x1.5	M 58x1.5	82	26	-	5	6	M5	6	0.489	72.5
NSA 60x1.5	M 60x1.5	84	26	-	5	6	M5	6	0.504	74.5
NSA 60x2	M 60x2	84	26	-	5	6	M5	6	0.507	74.5
NSA 62x1.5	M 62x1.5	86	28	-	5	6	M5	6	0.559	76.5



NSA PRECISION NUTS

Part Number	G°	Dm (mm)	B (mm)	D (mm)	N1	N2	P	Fixing Torque (Nm)	Weight (kg)	D1
NSA 65x1.5	M 65x1.5	88	28	-	5	6	M5	6	0.559	78.5
NSA 65x2	M 65x2	88	28	-	5	6	M5	6	0.6	78.5
NSA 68x1.5	M 68x1.5	95	28	-	5	8	M5	6	0.687	83
NSA 70x1.5	M 70x1.5	95	28	-	5	8	M5	6	0.642	85
NSA 70x2	M 70x2	95	28	-	5	10	M5	6	0.653	85
NSA 72x1.5	M 72x1.5	98	28	-	6	10	M6	10	0.684	86
NSA 75x1.5	M 75x1.5	100	28	-	6	10	M6	10	0.68	88
NSA 75x2	M 75x2	100	28	-	6	12	M6	10	0.68	88
NSA 80x2	M 80x2	110	32	-	6	12	M6	10	1.033	95
NSA 85x2	M 85x2	115	32	-	6	12	M6	10	1.103	100
NSA 90x2	M 90x2	120	32	-	6	12	M6	10	1.2	108
NSA 95x2	M 95x2	125	32	-	6	12	M6	10	1.2	113
NSA 100x2	M 100x2	130	32	-	6	12	M6	10	1.28	118
NSA 105x2	M 105x2	135	32	-	6	12	M6	10	1.2	123
NSA 110x2	M 110x2	140	32	-	6	12	M6	10	1.4	128
NSA 115x2	M 115x2	145	36	-	6	12	M6	10	1.6	133
NSA 120x2	M 120x2	155	36	-	6	12	M6	10	2	140
NSA 125x2	M 125x2	160	36	-	6	14	M6	10	2	148
NSA 130x3	M 130x3	165	36	-	6	14	M6	10	2.2	153
NSA 140x3	M 140x3	180	36	-	6	14	M6	10	2.638	165
NSA 150x3	M 150x3	190	36	-	6	14	M6	10	2.8	175
NSA 160x3	M 160x3	205	40	-	8	14	M8	25	3.8	185
NSA 170x3	M 170x3	215	40	-	8	14	M8	25	4	195
NSA 180x3	M 180x3	230	40	-	8	14	M8	25	4.6	210
NSA 190x3	M 190x3	240	40	-	8	14	M8	25	4.8	224
NSA 200x3	M 200x3	245	40	-	8	8	M8	25	4.6	229
NSA 210x3	M 210x3	270	44	250	-	8	M8	25	6.4	-
NSA 220x3	M 220x3	282	44	260	-	8	M8	25	6.8	-
NSA 230x3	M 230x3	295	44	270	-	8	M8	25	7.5	-
NSA 240x3	M 240x3	308	44	280	-	8	M8	25	8.1	-
NSA 250x3	M 250x3	322	44	290	-	8	M8	25	8.8	-
NSA 260x3	M 260x3	336	44	300	-	8	M8	25	9.4	-
NSA 270x3	M 270x3	350	44	310	-	8	M8	25	10.3	-
NSA 280x3	M 280x3	364	44	320	-	8	M8	25	11	-
NSA 290x3	M 290x3	376	44	330	-	8	M8	25	11.8	-
NSA 300x3	M 300x3	390	44	340	-	8	M8	25	12.4	-
NSA 310x4	M 310x4	400	54	360	-	8	M10	50	16.9	-
NSA 320x4	M 320x4	412	54	370	-	8	M10	50	17.7	-
NSA 330x4	M 330x4	424	54	380	-	8	M10	50	18.6	-
NSA 340x4	M 340x4	436	54	390	-	8	M10	50	19.4	-
NSA 350x4	M 350x4	450	54	400	-	10	M10	50	20.7	-
NSA 360x4	M 360x4	466	54	410	-	10	M10	50	22.4	-
NSA 370x4	M 370x4	478	54	420	-	10	M10	50	23.2	-
NSA 380x4	M 380x4	490	54	430	-	10	M10	50	24.2	-

